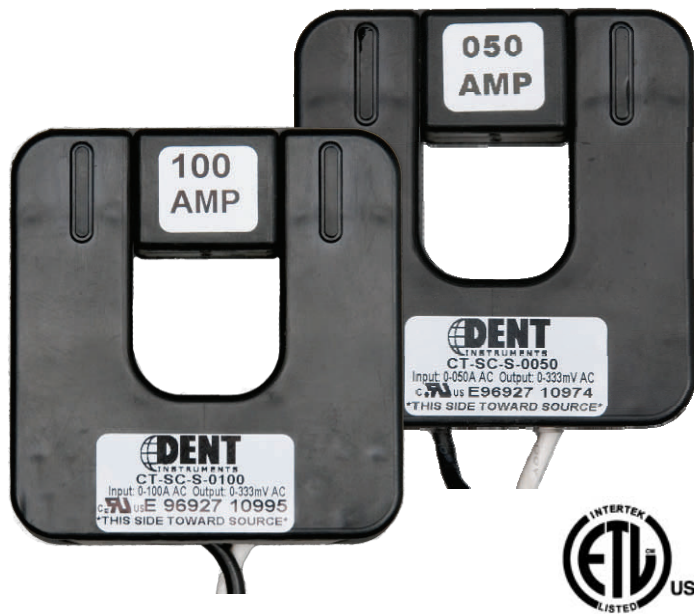


The low-cost solution for permanent or long-term studies. The split core design means no de-energizing or wire disconnection required.

Opening “Split-Core” Current Transformer (SCT) provides linear output voltage that is directly proportional to the input current. This current transformer is easily and safely installed over existing electrical power lines without disconnecting the lines or interrupting service.

DENT’s energy monitoring components are used for a variety of applications including building automation, tenant submetering, performance verification, energy management and new technology assessment.



ELECTRICAL SPECIFICATIONS

Output Signal

333mV @ rated current

Accuracy

+/- 1% at 10% to 130% of rated current

Phase Shift

<2° at rated current

Frequency Range

50 Hz to 400 Hz

MECHANICAL SPECIFICATIONS

Dimensions

5.08 x 5.34 x 1.55 cm
(2.0 x 2.1 x 0.6")

Polarity

White lead is positive

Output Lead

Leads 2.7 m (8 ft) twisted pair
22 AWG

Operating Temperature

Maximum 105°C (220°F)

DENT P/N	NOMINAL RATING (Amps)	USEFUL CURRENT RANGE (Amps)	DIMENSIONS				
			A	B	C	D	E
CT-SCS-0050	50	5 - 65	5.08 cm (2.0")	5.34 cm (2.1")	1.55 cm (0.6")	1.90 cm (0.75")	1.90 cm (0.75")
CT-SCS-0100	100	10 - 130	5.08 cm (2.0")	5.34 cm (2.1")	1.55 cm (0.6")	1.90 cm (0.75")	1.90 cm (0.75")

OTHER FEATURES

Window Size

1.90 cm (.75")

Weight

136 g (4.8 oz)

Dielectric Strength

5000V around the case
600V rated leads

Storage Temperature

Maximum 105°C (220°F)

Case Protection

Epoxy encapsulated housing

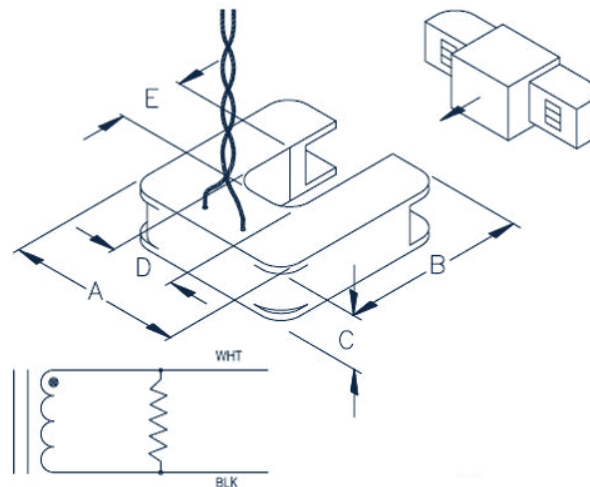
SAFETY SPECIFICATIONS

ETL Listed

Compliant with IEEE C57.13-1993

Working Voltage

Maximum 600 Vrms



ORDERING PART NUMBER

AVAILABLE UNTERMINATED (U) OR WITH BANANA PLUGS (B)

CT-SCS-0050-U or -B

CT-SCS-0100-U or -B